



Safety Inspection Report

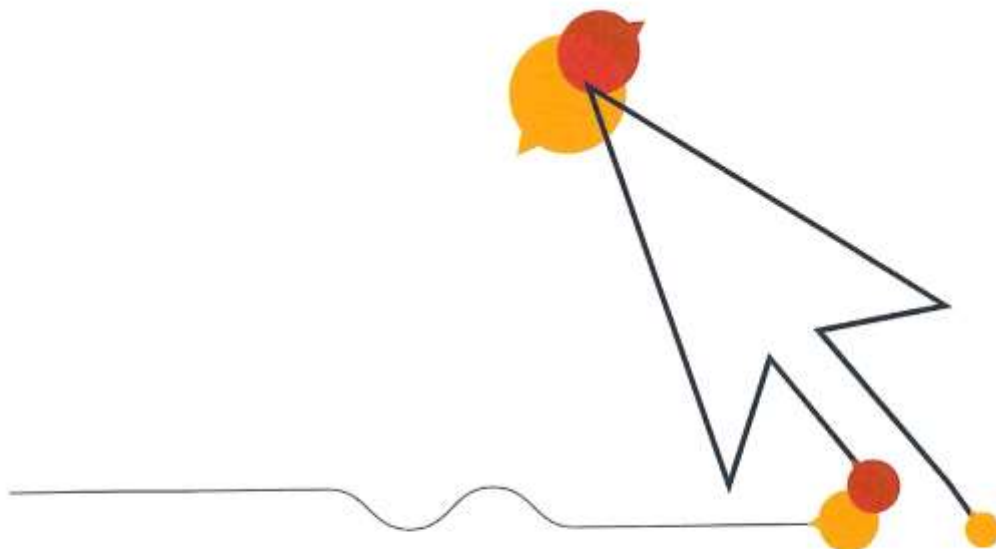
Post-installation Inspection

The Rype New Play Area



Lydd Town Council

09 February 2023



Playsafety Ltd is licensed by RoSPA to trade as RoSPA Play Safety



Safety Inspection Report

Post-installation Inspection

Site name: **The Rype New Play Area**
Date of inspection: **09 February 2023**
Inspector: **Chris Taylor**



Playsafety Ltd is licensed by RoSPA to trade as RoSPA Play Safety

How to read your report

The assets on site are categorised as **Ancillary Items** or **Play Items**, and listed under those headings.

Each item is listed in the style shown in the image below, which contains labels to aid interpretation as follows:

- 1) The name of the asset
- 2) The manufacturer of the asset, if known,
- 3) The innate or default risk score of the asset, assuming it has no faults and complies with standards,
- 4) The actual risk score of the asset at the time of inspection, being the highest of the finding risks or the innate risk,
- 5) A statement about whether the item complies with the appropriate standards, including the names of those standards,
- 6) Details about findings, if any, including what is wrong (Description), what to do about it (Tasks), notes to aid understanding (Notes), and photograph(s) of the issue.

The image shows a sample report card for a 'Primary Item'. It is annotated with numbered callouts (1-6) pointing to specific fields:

- 1:** Points to the 'Sample Asset Name' field.
- 2:** Points to the 'Manufacturer: Manufacturer Name' field.
- 3:** Points to the 'Potential risk score reduction: 1' field in the risk level summary.
- 4:** Points to the 'Revised risk score: 1' field in the risk level summary.
- 5:** Points to the 'Standards' section, which lists 'EN 1126-1:2017, EN 1176-2:2017' and a compliance statement.
- 6:** Points to the 'Finding' section, which includes 'Description', 'Tasks', 'Notes', and 'Finding Photos'.

The card also features a large 'asset image here' placeholder, a 'Risk Level' summary with a color-coded scale (Low, Medium, High), and a 'Surface Data' section with a small diagram.

Ancillary Items

Caerwil

The Overall Site



Maintenance Finding

Description

Additional comments are noted below.

Tasks

Read the notes for further action.

Note

The inspector recommends installing fencing to reduce the risk of dogs gaining entry. Benches should be a minimum of 1 m from the fencing. Bins should be between 2 m & 3 m from the benches / gates. Appropriate signage should be provided at all entrances.

Photo not possible

Risk level:

Low

Risk score:

6

Ancillary Items *Cowal + HAGS*

Maintenance Finding

Description

Additional comments are noted below.

Tasks

Read the notes for further action.

Note

The inspector believes that the indicated locations are most suitable for the potential toddler swings. Swings should be positioned away from the main routes of users.

Risk level:
See finding details

Finding Photos



Ancillary Items

Seating - Benches x 3



Maintenance Finding

Description

Fixtures loose or missing.

Tasks

Tighten.

Risk level:

Low

Risk score:

4

Finding Photos



Ancillary Items

Maintenance Finding

Description

Surface is uneven.

Tasks

Make good.

Risk level:

Low

Risk score:

4

Finding Photos



Ancillary Items

Litter Bin



Maintenance Finding

Description

Paintwork is in poor condition.

Tasks

De-scale back to good base material and coat with lead free paint, using appropriate precautions. Repairs may be necessary where corrosion is severe.

Note

Holes developing. The inspector recommends replacement. It may be possible to extend the life of the asset with suitable repairs.

Risk level:

Low

Risk score:

4

Finding Photos



Ancillary Items

Signage

Council



Risk level:
Low

Potential risk score reduction:
4

Remedial tasks:
1

Maintenance Finding

Description

Additional comments are noted below.

Tasks

Read the notes for further action.

Note

Dog ban signage provided, but not in a particularly prominent location. The inspector recommends installing a fence and positioning appropriate signage at the entrances.

Risk level:

Low

Risk score:

6

Finding Photos



Ancillary Items

Picnic Table

